

PENTLANDS OPEN STUDIOS

30th and 31st August 2025

STUDIOS OPEN 10am to 4pm FREE ENTRY

Studios and Artists

Please refer to individual artist/studio listings in our booklet for exact address and access information.

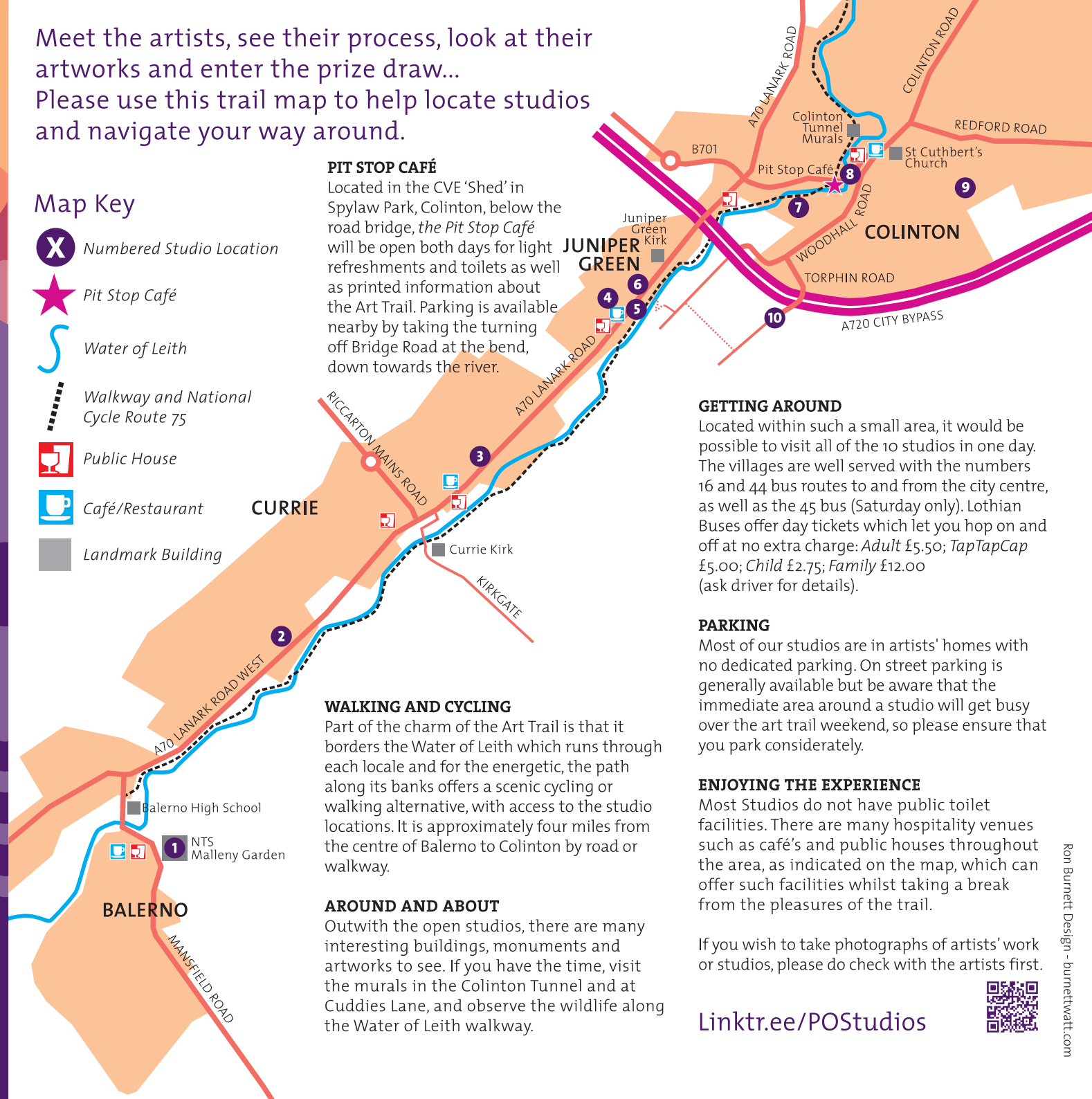
- 1 **JANET DYER** Botanical Illustrations
- 2 **GARY ANDERSON** Paintings
SHEILA CHAPMAN Lithograph Prints
SOOSAN DANESH Paintings
- 3 **JENNY MATTHEWS** Paintings & Prints
- 4 **JACQUELINE WATT** Paintings & Sketchbooks
RON BURNETT Drawings & Paintings
- 5 **JADE STOUT** Paintings
SANDRA VICK Paintings
- 6 **GILL WALTON** Drawings, Paintings & 3D Works
- 7 **PEN REID** Paintings, Drawings & Prints
- 8 **JENNIE LOUDON** Textiles
SASKIA GAVIN Jewellery & Containers
ALISON MOUNTAIN Paintings, Prints & Textiles
- 9 **SUSIE WILSON** Prints & Artist Books
GEN HARRISON Prints & Artist Books
LIZA GREEN Prints, Artist Books & Collages
- 10 **TIPHERETH PRINT STUDIO** Screenprints

THE ART TRAIL

Meet the artists, see their process, look at their artworks and enter the prize draw...
Please use this trail map to help locate studios and navigate your way around.

Map Key

-  Numbered Studio Location
-  Pit Stop Café
-  Water of Leith
-  Walkway and National Cycle Route 75
-  Public House
-  Café/Restaurant
-  Landmark Building



PIT STOP CAFÉ

Located in the CVE 'Shed' in Spylaw Park, Colinton, below the road bridge, the Pit Stop Café will be open both days for light refreshments and toilets as well as printed information about the Art Trail. Parking is available nearby by taking the turning off Bridge Road at the bend, down towards the river.

GETTING AROUND

Located within such a small area, it would be possible to visit all of the 10 studios in one day. The villages are well served with the numbers 16 and 44 bus routes to and from the city centre, as well as the 45 bus (Saturday only). Lothian Buses offer day tickets which let you hop on and off at no extra charge: *Adult* £5.50; *TapTapCap* £5.00; *Child* £2.75; *Family* £12.00 (ask driver for details).

PARKING

Most of our studios are in artists' homes with no dedicated parking. On street parking is generally available but be aware that the immediate area around a studio will get busy over the art trail weekend, so please ensure that you park considerately.

ENJOYING THE EXPERIENCE

Most Studios do not have public toilet facilities. There are many hospitality venues such as cafés and public houses throughout the area, as indicated on the map, which can offer such facilities whilst taking a break from the pleasures of the trail.

If you wish to take photographs of artists' work or studios, please do check with the artists first.

WALKING AND CYCLING

Part of the charm of the Art Trail is that it borders the Water of Leith which runs through each locale and for the energetic, the path along its banks offers a scenic cycling or walking alternative, with access to the studio locations. It is approximately four miles from the centre of Balerno to Colinton by road or walkway.

AROUND AND ABOUT

Outwith the open studios, there are many interesting buildings, monuments and artworks to see. If you have the time, visit the murals in the Colinton Tunnel and at Cuddies Lane, and observe the wildlife along the Water of Leith walkway.

[Linktr.ee/POSTudios](https://linktr.ee/POSTudios)



To participate in our prize draw...


Use this grid to collect a unique stamp from each studio you visit.


To be entered into the draw, leave the form with the last studio you visit or post it to:


508 Lanark Road,
Juniper Green
EH14 5DH

The more studios you visit, the better prize you have a chance of winning.

THE PRIZES

 1st Prize
(9 or more studios visited)
£150 voucher to spend with the
POSt 2025 artist of your choice.

 2nd Prize
(5-8 studios visited)
£100 voucher to spend with the
POSt 2025 artist of your choice.

 3rd Prize
(4 studios visited)
£50 voucher to spend with the
POSt 2025 artist of your choice.



[Linktr.ee/POStudios](https://linktr.ee/POStudios)

THE ART TRAIL PRIZE DRAW

1	2	3
4	5	6
7	8	9
10	<div>Name</div> <div>Address</div> <div></div> <div></div> <div>PhoneEmail</div>	